

Key Features

- 3LCD Laser Projector
- WUXGA 1920 x 1200
- 8,000 ANSI Lumens Brightness
- 2,500,000 : 1 Contrast Ratio
- 50,000 Hours Light Source Life (Long life 2 mode)
- HDBaseT x 1, HDMI x 2, HDMI Out x 1, Display Port x 1, SDI x 1
- Blending and Warping with New Software Tool
- 360° Installation
- Multiple Lens Options (This model ships without lens)
- Quiet Operation 34 dB (Normal), 26 dB (Whisper)
- 5-Year/20,000 Hours Warranty



Maxell expands their laser projector line with a 8,000 ANSI lumens, 3LCD model delivering larger-than-life performance.

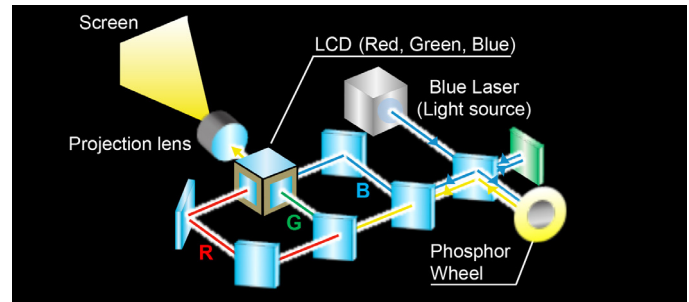
Maxell's laser light source projector line now includes the 3LCD model MP-WU8801B with 8,000 ANSI lumens. The new laser phosphor light source offers approximately 20,000 hours (normal mode) of operation time and is virtually maintenance free, there is no lamp to replace providing a dramatic reduction in total cost of ownership. Ideal for digital signage applications, as well as a perfect choice for auditoriums, lecture halls, large classrooms, conference rooms and museums. Plus, 8,000 ANSI lumens brightness and 2,500,000 : 1 contrast ratio results in super bright display with outstanding image clarity and uniformity. Additionally a suite of advanced features includes High Dynamic Contrast Range (HDCR2), 3 HDMI ports, and Maxell's original technology Accentualizer. As with all Maxell projectors, you can expect vibrant image quality, cost-efficient operation, and long-lasting reliability. For added piece of mind, Maxell's MP-WU8801B is also backed by a generous 5-year warranty and our world-class service and support programs.



Long Life 20,000 Hours Laser Light Source

Light source combines blue laser diodes and phosphor which can achieve over 8,000 lumens. The projection image is bright and clear, with vivid colors. Since lamp replacement is unnecessary, maintenance cost is reduced and by not using mercury lamps, the projectors are eco-friendly.

Plus, Maxell's unique cooling system can achieve a low noise level of 26dB in whisper mode. The life of the light source is approximately 20,000 hours at normal mode but by using other modes which reduce the brightness or operation period, its life can be extended up to 50,000 hours. These mode settings can be used for different purposes depending on the application of the projector.



UNIQUE FEATURES

4K Signal Input Capability



The projectors allow 4K signal input on HDMI1, HDBaseT and Display Port input terminals. You can enjoy much better viewing experience with a 4K Ultra HD Blu-ray™ player or other devices. (HDMI1 and HDBaseT support 4K@24/25/30/50/60 signals. Display Port supports 4K@24/25/30 signals.)

Accentualizer

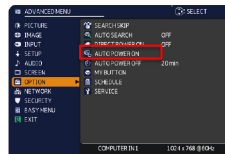
Maxell original technology makes pictures look more real by enhancing sharpness, gloss and shade to make pictures as clear as pictures on a flat-panel device. You can also adjust the effects by three levels according to your surroundings so that the colors of projected images are the actual colors of the objects they represent.



Auto Power On

When the projector is in standby mode and detects the video signal input from an external device, this function starts up the projector to display the image automatically on the screen. This makes the time to start up the projector and begin presenting quicker and easier.

- This function is unavailable when STANDBY MODE is set to NETWORK(WOL) or SAVING.
- This function may work unintentionally by connected external device.



Color Management



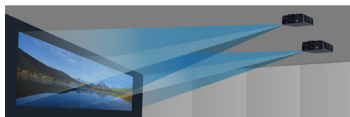
Allows you to change the HUE, SATURATION, LUMINANCE of each 6 colors (red, green, blue, cyan, magenta and yellow) without influencing each other. With this new technology, for example, you can change only bluish colors, such as the sky, while maintaining the other colors by adjusting the HUE of blue.

Edge Blending

Projectors are equipped with the Edge Blending function that achieves the seamless projection of one image using multiple projectors. The MP-WU8801B comes with various blending functions that meet the level users are looking for.

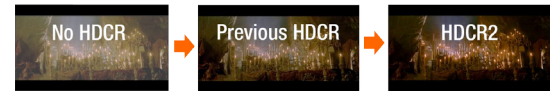
Instant blending: Easily perform blending processing without the use of any special equipment.

Automatic blending: Use a camera and quickly perform high precision blending processing automatically. *Requires installation of a specialized application to your computer.*



HDCR2 (High Dynamic Contrast Range)

When average projectors are used in bright rooms, the darker colors of an image deteriorate and images become unclear. Using this function, blurred images caused by room lighting or outside light sources are corrected, and an effect similar to increasing contrast occurs. The recent enhancement to HDCR2 achieves not only auto tone enhancement but also auto color enhancement. This results in clear and vivid images even in bright rooms.



HDMI Out



When sharing content on multiple screens by multiple projectors, HDMI out is used to bring the content signal from one projector to another.

Perfect Fit 2



Enables the user to adjust individual corners and sides independent of one another. Perfect Fit 2 provides vertical and horizontal digital correction of either barrel or pin cushion distortions. This feature helps correct geometric and complicated distortions. Perfect Fit 2 allows the projected image to fit correctly to the screen quickly and easily.

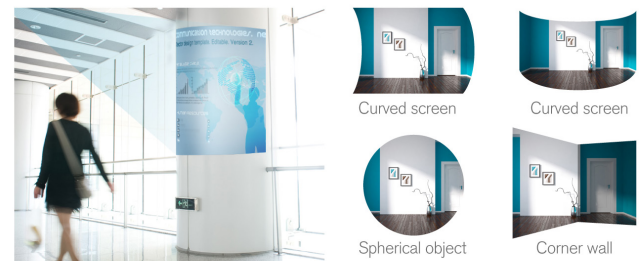
Projector Quick Connection App For Mobile Devices



Our iOS and Android applications offers projector control and also provides the capability to display photos, document files and web site contents. Available for iPad®, iPhone® and Android devices. Works over your LAN via your RJ-45 port or via an optional USBWL5G wireless adapter.

Warping

Warping is possible from your computer by using the specialized application. Projection is possible on spherical surfaces and surfaces with corners, as well as conventional flat screens.



STANDARD FEATURES

Motorized Zoom, Focus and Lens Shift: Allows for greater range of installation possibilities. With the 2 speed motorized function you can make fine adjustments through the remote control or RS232/IP device.

Network Control, Maintenance and Security: Embedded networking gives you the ability to manage and control multiple projectors over your LAN. Features include scheduling of events, centralized reporting, image transfer and e-mail alerts for reactive and routine maintenance.

Picture By Picture: Enables the content from two input sources to be displayed simultaneously, side by side on one screen. You can use two sources including 2 HDMI, with both images sharing equal screen size. The feature is ideal for teleconferencing applications..

Picture In Picture: Enables you to display one image inside another image using two sources including 2 HDMI.

PIN Lock / MyScreen / MyText: PIN lock protection can limit projector users. MyScreen PIN lock keeps captured images on the startup screen. Users can set any name logo to MyScreen, clearly identifying ownership. MyText provides the ability to write text on the startup screen such as model name, serial number or location..

Wireless Presentation Compatible: Connect the projector to a computer or your network using the optional USB wireless adapter (part number USBWL5G). The adapter supports IEEE802.11 a/b/g/n/ac.

360° Rotation/Portrait Projection: Display rotation of 360° and portrait projection for creative applications and greater installation flexibility.



Front View



Ceiling Mount

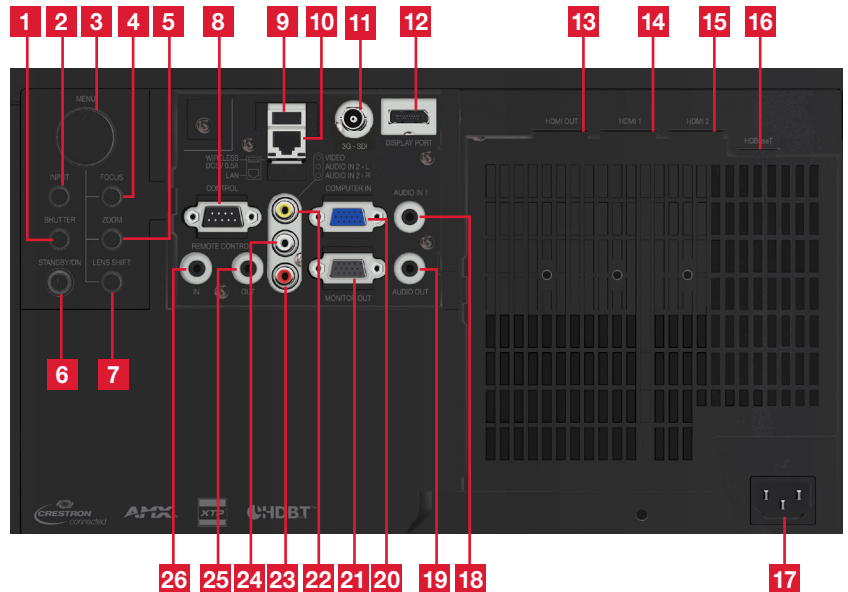


Side (panel closed)



Side (panel open)

Input/Outputs



- | | | | |
|-----------------|-----------------------|-----------------|------------------------|
| 1. Shutter | 8. Control | 14. HDMI 1 | 21. Monitor Out |
| 2. Input | 9. Wireless DC5V 0.5A | 15. HDMI 2 | 22. Video |
| 3. Menu | 10. LAN | 16. HDBaseT | 23. Audio In 2 Right |
| 4. Focus | 11. 3G-SDI | 17. AC Power | 24. Audio In 2 Left |
| 5. Zoom | 12. Display Port | 18. Audio In 1 | 25. Remote Control Out |
| 6. Standby / On | 13. HDMI Out | 19. Audio Out | 26. Remote Control In |
| 7. Lens Shift | | 20. Computer In | |

MP-WU8801B

Accessories and Lenses

Supplied Accessories	Power cable, RGB cable, remote control, AA batteries x 2, lens cover, terminal cover x 2, cable tie x 4, security label, user's manual (concise)
Optional Accessories	USBWL5G wireless adapter
Optional Lenses	7 optional lenses are available: FL720, USL701, FL701, SL712, ML713, LL704, UL705 (This model ships without a lens)
Replacement Parts	
Lamp	Lamp free
Remote Control	HL02806
Filter	UX43481

Projection Throw Chart

Screen Size 16:10		Throw Distance	
Diagonal	Width	Min	Max
30	25	45	75
80	68	117	198
100	85	146	248
150	127	219	371
200	170	291	494
250	212	363	617
300	254	435	740
600	509	869	1478

Throw Ratio: 1.7 - 2.9 : 1 (distance : width)
Screen size and throw distance are measured in inches with standard lens ML713.

Projection Lens Chart

Lens	Inches	Meters
FL720	3.9	0.1
USL701	67 - 87	1.7 - 2.2
FL701	69	1.8
SL712	100 - 151	2.5 - 3.8
ML713	146 - 248	3.7 - 6.3
LL704	240 - 407	6.1 - 10.3
UL705	407 - 691	10.3 - 17.6

Projection distances measured in inches and meters with standard lens and optional lenses when projecting onto a 100" diagonal screen.

Specifications

Display	Projection Technology	3 LCD, 3 chip technology
	Resolution	WUXGA 1920 x 1200
	Brightness	8,000 ANSI lumens
	Colors	10.7 billion colors
	Aspect Ratio	Native 4:3, 16:9, 16:10, 14:9 and zoom compatible
	Contrast Ratio	2,500,000 : 1
	Throw Ratio (distance : width)	Specifications will vary depending on which lens is used with the projector (1.7 - 2.9 : 1 with standard lens ML713)
Operation	Focus Distance	Specifications will vary depending on which lens is used with the projector (45" - 1478" with ML713)
	Display Size	30" - 600" (100" - 350" with FL720, 60" - 600" with USL701)
	Lens	f = 1.6 - 2.0 mm, x 1.7 motorized zoom, focus and lens shift (with ML713) (This models ships without a lens)
	Lens Shift	Motorized (V: -16.7% to +56.5%, H: +/- 10%)
	Expected Light Source Life*	Approx. 20,000 hours (Normal and Whisper mode), 30,000 hours (Long life 1 mode), 50,000 hours (Long life 2 mode)
	Expected Filter Life**	Approx. 30,000 hours
	Speaker Output	N/A
Compatibility	Keystone	H and V +/- 30° (with ML713)
	Computer	VGA, SVGA, XGA, WXGA, SXGA, WXGA+, WSXGA+, UXGA, WUXGA, MAC 16" (fH : 15 - 106 kHz, fV : 50 - 120 Hz)
	Composite Video	NTSC, NTSC4.43, PAL, PAL-M, -N, SECAM
	Component Video	480i, 480p, 576i, 576p, 720p, 1081i, 1080p,
	HDMI & HDBaseT & Display Port & SDI	480i, 480p, 576i, 720p, 1080i, 1080p, 4K* Computer signal *4K supported with HDMI1, HDBaseT and Display Port (Display Port supports 4K (24/25/30 Hz))
	Digital Input	HDBaseT x 1, HDMI x 2, Display Port x 1, SDI x 1
	Digital Output	HDMI x 1
Connectors	Computer Input 1	15-pin mini D-sub x 1
	Computer Monitor Output	15-pin mini D-sub x 1
	Video Input	
	Composite Video	RCA jack x 1
	Component Video	15-pin mini D-sub (shared with computer input)
	Audio Input	3.5 mm stereo mini jack x 1, RCA jack (L/R) x 1
	Audio Output	3.5 mm stereo mini jack x 1
	Network LAN Wired	RCA jack x 1 (10 base-T / 100 base-TX)
	Network LAN Wireless	USB-A, IEEE802.11 a/b/g/n/ac - optional wireless adapter required
	HDBaseT	RJ-45 port x 1
Ratings & Warranty	USB	Type A x 1 (wireless network)
	Control Terminals	9-pin D-sub x 1 (RS-232 control)
	Power Supply	AC100-120V / AC220-240V, 50/60Hz
	Power Consumption	580W/560W
	Operating Temperature	32°F - 104°F (0°C - 40°C)
	Dimensions (W x D x H)	22.9" x 16.9" x 8.5" (excluding protrusions)
	Weight	Approximately 40.3 lbs.
	Approvals	UL 60950-1 / cUL, FCC part 15 subpart B Class A
	Warranty	5-year/20,000 hours (whichever occurs first) limited parts and labor

* Actual light source life will vary by individual light source based on environmental conditions, selected operating mode, user settings and usage. Hours of average light source life specified are not guaranteed and do not constitute part of the product or light source warranty. Light source brightness decreases over time.

** Actual filter life will vary by individual filter based on environmental conditions, selected operating mode, user settings and usage. Hours of expected filter life specified are not guaranteed and do not constitute part of the product warranty.



MX0663-Rev.3-07/19

All specifications subject to change without notice.
©2019 Maxell Corporation of America. All Rights Reserved.



Maxell Corporation of America

Toll Free: 1.800.377.5887

Web: www.maxellproav.com

